



**India Meteorological Department  
(Ministry of Earth Sciences)**

**NATIONAL BULLETIN NO. 12 (ARB/03/2022)**

**TIME OF ISSUE: 2020 HOURS IST**

**DATED: 16.12.2022**

**FROM: INDIA METEOROLOGICAL DEPARTMENT (FAX NO. 24643965/24699216/24623220)**

**TO: CONTROL ROOM, NDM, MINISTRY OF HOME AFFAIRS (FAX.NO. 23093750)  
CONTROL ROOM NDMA (FAX.NO. 26701729)  
CABINET SECRETARIAT (FAX.NO.23012284, 23018638)  
PS TO HON'BLE MINISTER FOR S & T AND EARTH SCIENCES (FAX NO.23316745)  
SECRETARY, MOES (FAX NO. 24629777)  
H.Q. (INTEGRATED DEFENCE STAFF AND CDS) (FAX NO. 23005137/23005147)  
DIRECTOR GENERAL, DOORDARSHAN (23385843)  
DIRECTOR GENERAL, AIR (23421105, 23421219)  
PIB MOES (FAX NO. 23389042)  
UNI (FAX NO. 23355841)  
D.G. NATIONAL DISASTER RESPONSE FORCE (NDRF) (FAX NO. 26105912, 2436 3260)  
DIRECTOR, PUNCTUALITY, INDIAN RAILWAYS (FAX NO. 23388503)  
CHIEF SECRETARY, GUJARAT (FAX NO. 079-23250305)  
CHIEF SECRETARY, DAMAN & DIU (FAX NO. 0260-2230775)  
CHIEF SECRETARY, DADRA & NAGAR HAVELI (FAX NO. 0260-2645466)  
CHIEF SECRETARY, GOA (FAX NO. 0832-2415201)  
CHIEF SECRETARY, MAHARASHTRA (FAX NO. 022- 22028594)  
CHIEF SECRETARY, KARNATAKA (FAX NO. 080-22258913)  
CHIEF SECRETARY, KERALA (FAX NO. 0471-2327176)  
ADMINISTRATOR, LAKSHADWEEP ISLANDS (FAX NO. 0413-262184)  
CHIEF SECRETARY, ANDHRA PRADESH (FAX NO. 0863-2441029, 08645-246600)  
CHIEF SECRETARY, TAMIL NADU (FAX NO 044-25672304)  
CHIEF SECRETARY, PUDUCHERRY (FAX NO 0413-2334145)  
CHIEF SECRETARY, GOVT. OF GUJARAT (FAX NO. 079-23250305)  
ADMINISTRATOR, ANDAMAN & NICOBAR ISLANDS (FAX NO. 03192- 232656)**

**Sub: (A) Deep Depression weakened into Depression over Westcentral & adjoining Eastcentral Arabian Sea  
(B) Low pressure area over Southeast Bay of Bengal & adjoining areas of East Equatorial Indian Ocean**

**(A) Depression over Westcentral & adjoining Eastcentral Arabian Sea**

Deep Depression over Eastcentral & adjoining Westcentral Arabian Sea moved west-northwestwards with a speed of 11 kmph during past 06 hours, weakened into a depression and lay centered at 1730 hrs IST of today, the 16<sup>th</sup> December 2022 over Westcentral & adjoining Eastcentral Arabian Sea near latitude 14.0°N and longitude 63.8°E about 1020 km west-northwest of Aminidivi (Lakshadweep), 1090 km west-southwest of Panjim (Goa) and 1090 km east-southeast of Salalah (Oman).

It is very likely to move nearly westwards and weaken gradually into a well marked low pressure area by 17<sup>th</sup> December evening.

## Forecast Track and Intensity:

Date/Time (IST)	Forecast Lead Period	Position (Lat. °N/Long. °E)	Maximum sustained surface wind speed (kmph)	Category of cyclonic disturbance
16.12.22/1730	00	14.0/63.8	45-55 gusting to 65	Depression
17.12.22/0530	12	14.2/62.5	40-50 gusting to 60	Depression
17.12.22/1730	24	14.2/61.2	25-35 gusting to 45	Well Marked Low Pressure Area

### Warnings:

(i) **Heavy Rainfall warning: No warning** as the deep depression is moving away from India coast.

### (ii) **Wind warning (warning graphics enclosed)**

- **Eastcentral Arabian Sea: Squally weather with wind speed reaching 45-55 kmph gusting to 65 kmph** is prevailing around the system center and is likely to decrease gradually becoming **40-50 kmph gusting to 60 kmph** by 17<sup>th</sup> morning. It will gradually decrease further becoming 25-35 kmph gusting to 45 kmph by 17<sup>th</sup> evening.
- **Westcentral Arabian Sea: Squally weather with wind speed reaching 45-55 kmph gusting to 65 kmph** is prevailing near the system center. It is likely decrease gradually becoming **40-50 kmph gusting to 60 kmph** by 17<sup>th</sup> morning and decrease further thereafter.
- **Southwest Arabian Sea: Squally weather with wind speed reaching 45-55 kmph gusting to 65 kmph** is prevailing over the adjoining Southeast Arabian Sea region and is likely to become **40-50 kmph gusting to 60 kmph** by 17<sup>th</sup> December morning. It will gradually decrease thereafter.

### (iii) **Sea Condition**

- ❖ **Eastcentral Arabian Sea: Sea Condition** is likely to be rough till 17<sup>th</sup> morning and improve thereafter.
- ❖ **Westcentral Arabian Sea: Sea Condition** is likely to be rough till 17<sup>th</sup> December evening and improve thereafter.
- ❖ **Southwest Arabian Sea: Sea Condition** is likely to be rough till 17<sup>th</sup> December evening and improve thereafter.

### (iv) **Fishermen Warning**

Fishermen are advised not to venture into

- ❖ **Eastcentral Arabian Sea** till morning of 17<sup>th</sup> December.
- ❖ **Westcentral & Southwest Arabian Sea** till 17<sup>th</sup> December.

## (B) **Low pressure area over Southeast Bay of Bengal & adjoining East Equatorial Indian Ocean**

The **Low Pressure Area** over Southeast Bay of Bengal & adjoining East Equatorial Indian Ocean persists over the same region at 1730 hours IST of today, the 16<sup>th</sup> December. It is likely to move westwards and maintain its intensity over South Bay of Bengal till morning of 17<sup>th</sup> December 2022.

### Warnings:

### (i) **Heavy Rainfall Warning:**

Light to moderate rainfall at many places with heavy rainfall at isolated places is very likely over Nicobar Islands on 16<sup>th</sup> December, 2022.

**(ii) Wind warning:**

- ❖ **Squally weather with wind speed reaching 35-45 kmph gusting to 55 kmph** is very likely over south Andaman Sea till morning of 17<sup>th</sup> December.
- ❖ **Squally wind speed reaching 35-45 kmph gusting to 55 kmph** is likely over Southeast Bay of Bengal till morning of 17<sup>th</sup> December.
- ❖ **Squally wind speed reaching 35-45 kmph gusting to 55 kmph** is likely to prevail over Southwest Bay of Bengal on 16<sup>th</sup> and 17<sup>th</sup> December

**(iii) Sea condition: Sea condition is likely to be rough over**

- ❖ South Andaman Sea till morning of 17<sup>th</sup> December.
- ❖ Southeast Bay of Bengal till morning of 17<sup>th</sup> December.
- ❖ Southwest Bay of Bengal on 16<sup>th</sup> and 17<sup>th</sup> December.

**(iv) Fishermen Warning (warning graphics enclosed)**

Fishermen are advised not to venture into:

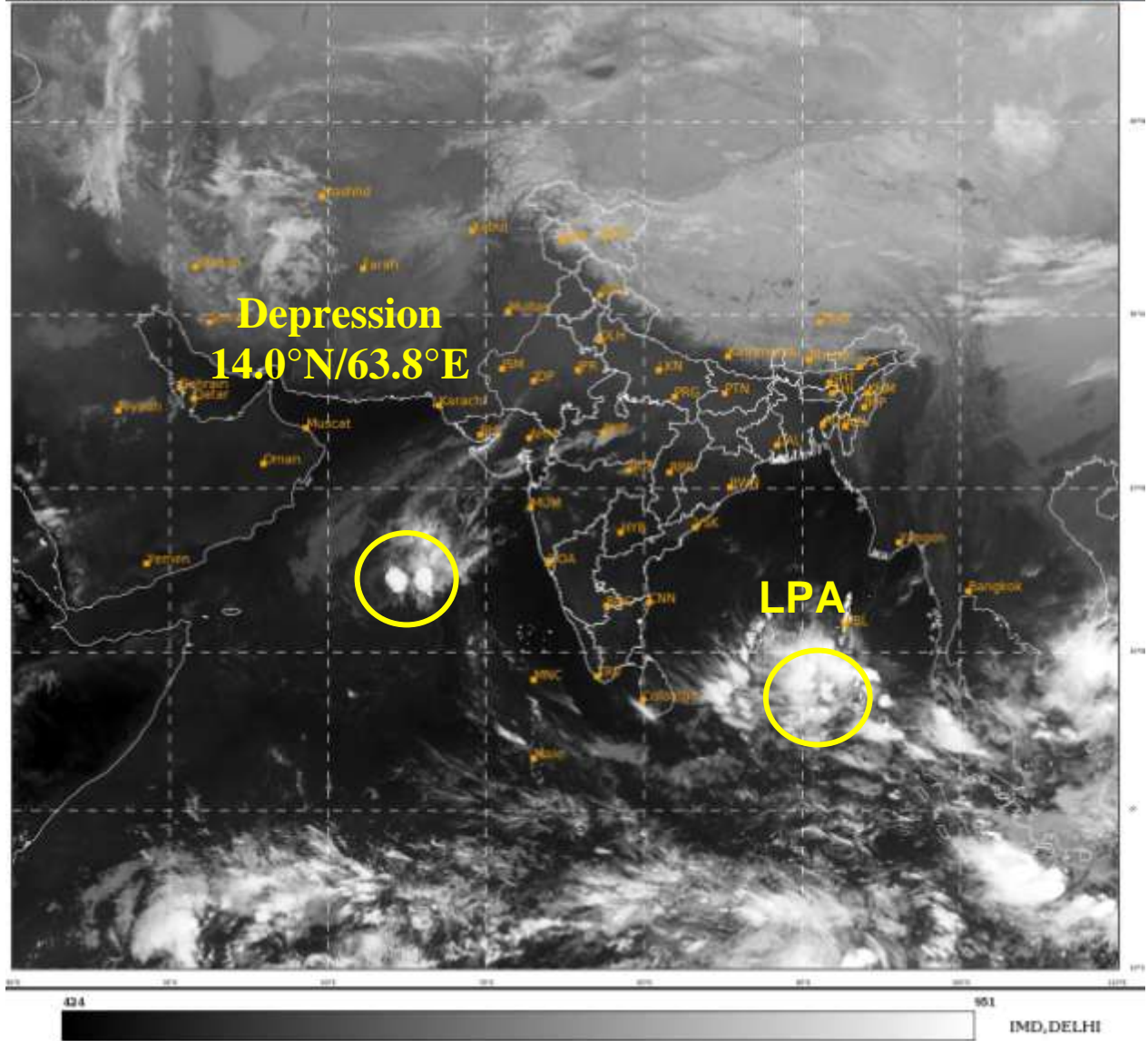
- ❖ South Andaman Sea till morning of 17<sup>th</sup> December.
- ❖ Southeast Bay of Bengal till morning of 17<sup>th</sup> December.
- ❖ Southwest Bay of Bengal on 16<sup>th</sup> and 17<sup>th</sup> December.

**Both the systems are under continuous surveillance and the next message will be issued at 0230 hours IST of 17<sup>th</sup> December, 2022.**

**(Ananda Kumar Das)**  
**Scientist E, Cyclone Warning Division, New Delhi**

*Copy to: ACWC Mumbai/ ACWC Chennai/ /CWC Ahmedabad/ CWC Thiruvananthapuram/MC Goa*

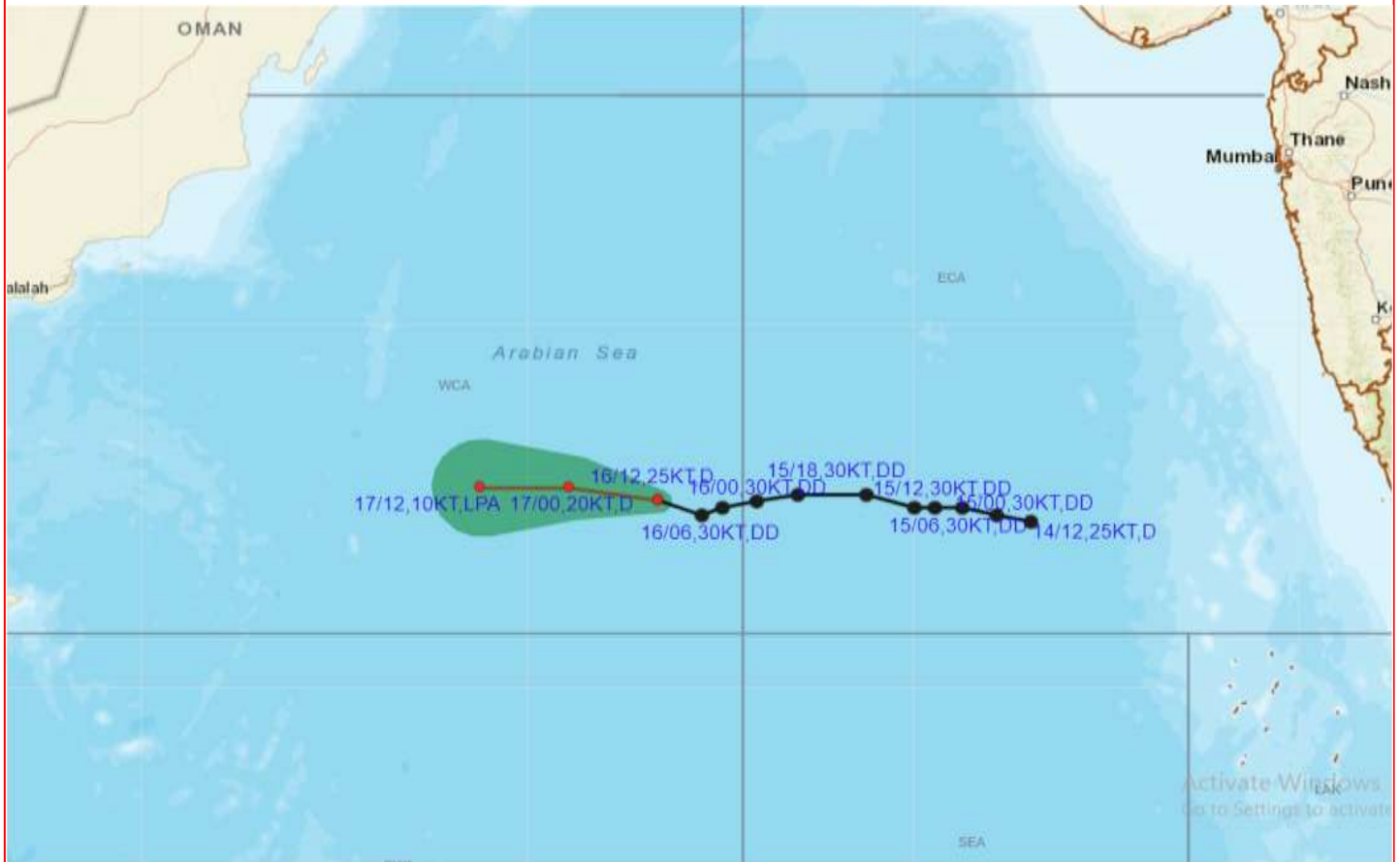
**LEGEND: Heavy Rainfall:** 64.5 to 115.5mm, **Very Heavy Rainfall:** 115.6 to 204.4mm  
**Most Places:** more than 76% of total stations, **Isolated Places:** Less than 25% of total



LPA: Low Pressure Area



# OBSERVED AND FORECAST TRACK OF DEPRESSION OVER EASTCENTRAL ADJOINING WESTCENTRAL ARABIAN SEA BASED ON 1200 UTC OF 16<sup>TH</sup> DECEMBER, 2022



DATE/TIME IN UTC

IST=UTC + 0530

L: LOW PRESSURE AREA

WML: WELL MARKED LOW PRESSURE AREA

D: DEPRESSION (17-27 KT)

DD: DEEP DEPRESSION (28-33 KT)

CS: CYCLONIC STORM (34-47 KT)

SCS: SEVERE CYCLONIC STORM (48-63KT)

VSCS: VERY SEVERE CYCLONIC STORM (64-89 KT)

ECS: EXTREMELY SEVERE CYCLONIC STORM (90-119 KT)

SuCS: SUPER CYCLONIC STORM ( $\geq 20$  KT)

● LESS THAN 34 KT

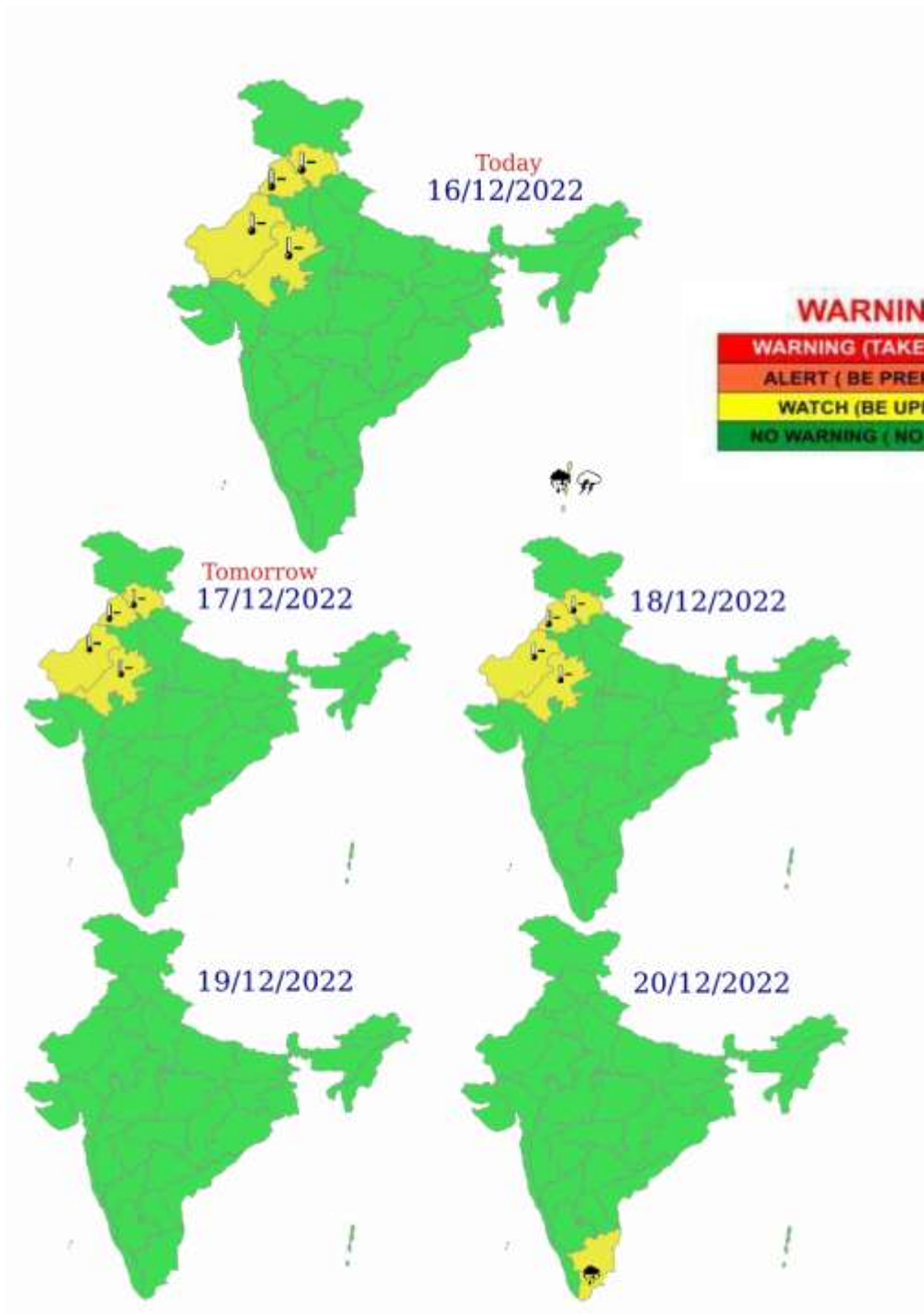
○ 34-47 KT

○  $\geq 48$  KT

— OBSERVED TRACK

— FORECAST TRACK

▲ CONE OF UNCERTAINTY



 Heavy Rain

 Heavy Snow

 Thunderstorm

 Dust Storm

 Strong Winds

 Visibility

 Cyclone

 Squall/ Hail

 Frost

 Cold Wave

 Heat Wave

 Sea State

# Fishermen warning graphics



Squally WX with wind speed 40-45 kmph gusting to 55 kmph
Squally wind speed 45-55 kmph gusting to 65 kmph
Squally wind speed 55-65 kmph gusting to 75 kmph

**Fishermen are advised not to venture into the marked areas.**